

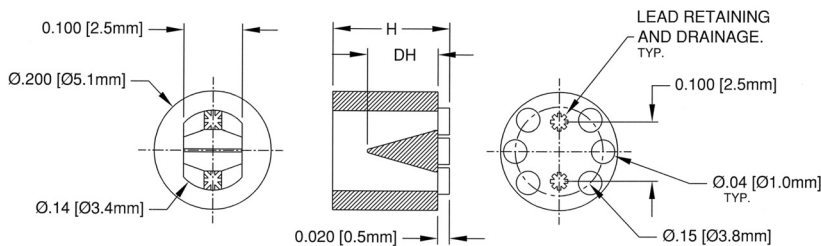
LED MOUNTS/SPACERS

Molded Self-Retaining LED Mounts

- One Universal Style for Both T-1 (3mm) and T-1³/₄ (5mm) LEDs
- Internal Tapered Divider Prevents Leads from Shorting
- 54 Standard Stock Lengths from .120" - .900" (3.1 - 22.9)

LTM/NTM Series

Part No.	H	DH	Part No.	H	DH	Part No.	H	DH
LTM/NTM-120	.120 (3.1)	.060 (1.5)	LTM/NTM-300	.300 (7.6)	.185 (4.7)	LTM/NTM-490	.490 (12.5)	.435 (11.1)
LTM/NTM-130	.130 (3.3)		LTM/NTM-310	.310 (7.9)		LTM/NTM-500	.500 (12.7)	
LTM/NTM-140	.140 (3.6)		LTM/NTM-320	.320 (8.1)		LTM/NTM-520	.520 (13.2)	
LTM/NTM-150	.150 (3.8)		LTM/NTM-330	.330 (8.4)		LTM/NTM-550	.550 (14.0)	
LTM/NTM-160	.160 (4.1)		LTM/NTM-340	.340 (8.6)		LTM/NTM-570	.570 (14.5)	
LTM/NTM-170	.170 (4.3)		LTM/NTM-350	.350 (8.9)		LTM/NTM-600	.600 (15.2)	
LTM/NTM-180	.180 (4.6)		LTM/NTM-360	.360 (9.1)		LTM/NTM-620	.620 (15.8)	
LTM/NTM-190	.190 (4.8)		LTM/NTM-370	.370 (9.4)		LTM/NTM-650	.650 (16.5)	
LTM/NTM-200	.200 (5.1)		LTM/NTM-380	.380 (9.7)		LTM/NTM-670	.670 (17.0)	
LTM/NTM-210	.210 (5.3)		LTM/NTM-390	.390 (9.9)		LTM/NTM-700	.700 (17.8)	
LTM/NTM-220	.220 (5.6)	LTM/NTM-400	.400 (10.2)	LTM/NTM-720	.720 (18.3)			
LTM/NTM-230	.230 (5.8)	LTM/NTM-410	.410 (10.4)	LTM/NTM-750	.750 (19.1)			
LTM/NTM-240	.240 (6.1)	LTM/NTM-420	.420 (10.7)	LTM/NTM-770	.770 (19.6)			
LTM/NTM-250	.250 (6.4)	LTM/NTM-430	.430 (10.9)	LTM/NTM-800	.800 (20.3)			
LTM/NTM-260	.260 (6.6)	LTM/NTM-440	.440 (11.2)	LTM/NTM-820	.820 (20.8)			
LTM/NTM-270	.270 (6.9)	LTM/NTM-450	.450 (11.4)	LTM/NTM-850	.850 (21.6)			
LTM/NTM-280	.280 (7.1)	LTM/NTM-460	.460 (11.7)	LTM/NTM-870	.870 (22.1)			
LTM/NTM-290	.290 (7.4)	LTM/NTM-480	.480 (12.2)	LTM/NTM-900	.900 (22.9)			



To order, Specify LTM or NTM-XXX

Height
Series

Note: A thin film of flash is allowed for improved retention.



LTM Series

Material Specifications:

UL Rated 94V-0 Dow Questra
Black Crystalline Polymer

Oxygen Index: +28%
UL File #E161817



NTM Series

Material Specifications:

UL Rated 94V-2 Natural 6/6 Nylon per
ASTM D4066 PA111

Oxygen Index: +28%
UL File #E135532

Bivar's molded, self-retaining LED mounts allow easier assembly and handling while internal dividers prevent leads from shorting in the field. The LTM Series is also ideal for severe duty environments where temperature extremes are a concern.

Bivar's molded NTM LED mounts are a cost effective alternative to the industry standard. Available in a wide range of colors they may be dyed for a small additional charge.